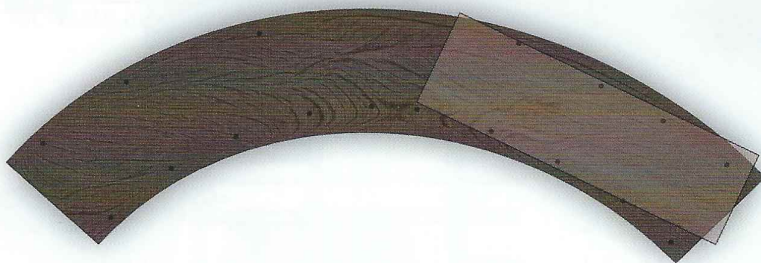
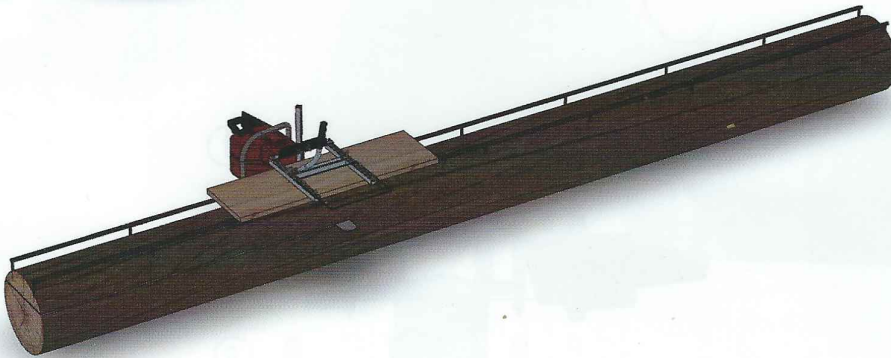
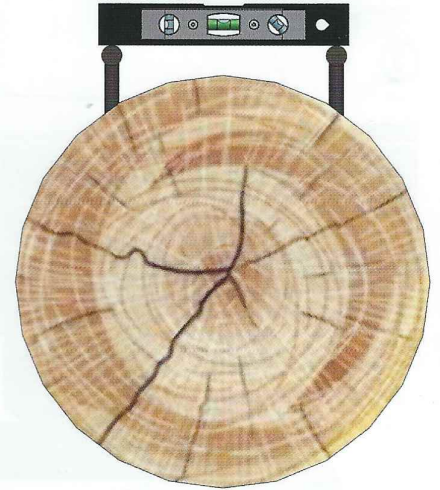


OVERSIZED OR CURVED LOGS



If your log is longer than the EZ rails or 2x4s used with the slabbing brackets, or if the log is curved, use the following method to make your first cut. You will need a flat plank, 6-inch long spikes, some heavy dut cord, and a spirit level.



Drive spikes along length of log. Secure the cord on the spikes and use spirit level to ensure they are level. Once spikes are level along the full length of the log, set the board on top of the spikes. Using the board to support the mill, begin cutting. Once you have cut along 2/3 of the board, move the board along the length of the log and continue in the same manner until first cut is complete.