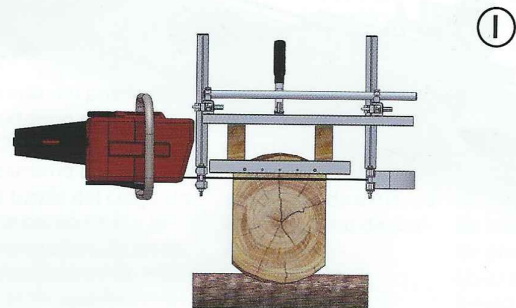
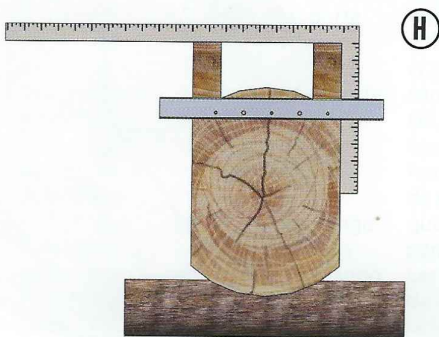
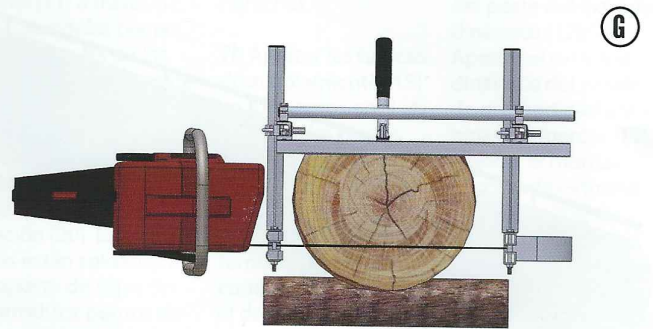


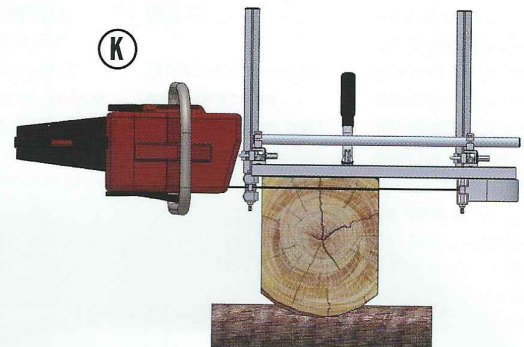
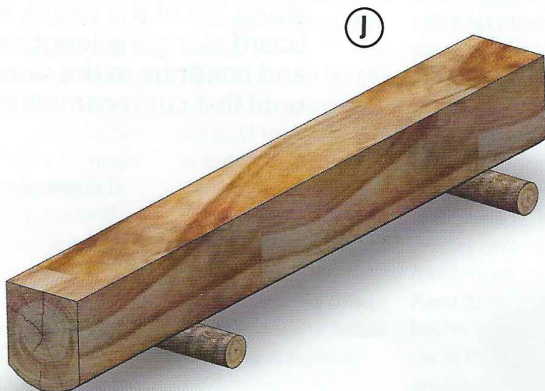
# MAKING DIMENSIONAL LUMBER

To make dimensional lumber, make your first cut as shown in step 1.

**Step 3:** Once first cut has been made, set mill to desired depth (fig G). This will be the width of the final beam. When making second cut, make sure to use wedges so that weight of log does not pinch the bar and chain.



**Step 4:** Once second cut has been made, rotate log 90 degrees. Using a carpenter's square, set first cut system at right angles to cuts one and two (fig H). Make third cut in same manner as first two (fig I). Log is now ready to cut dimensional lumber (fig J).



**Step 5:** Set depth on mill to achieve desired lumber dimensions (fig K)